

“One Stop Solution For Construction Needs”



COMPANY PROFILE

Kaushaltar, Bhaktapur

Contact No : 9851181253, 9801124005

Email : info@kshamadevigroup.com

www.kshamadevigroup.com

KSHAMADEVI GROUP

BACKGROUND:

Kshamadevi Group started its initial business from Kshamadevi International Pvt. Ltd which was founded in October 13, 2005. The company took its name on the reference of highly respectful and popular temple from Sindupalchowk District. To expand its business as a group Kshamadevi Group was established in 2010 with a slogan “One stop solution for all construction needs.”

With the team of people having extensive experience in the related field, strong financial position, availability of resources to supply all over the country, and establishment of strong networks with various stakeholders; undoubtedly Kshamadevi Group is transforming itself as the most trustworthy corporation in field of Construction, Trading and Manufacturing. It has both the desire and capacity for solving the entire construction related requirements of the customers from all over the country.

Kshamadevi Group of Companies is a construction oriented business organization set up by a group of people having extensive experience of more than 15 years in the field of Construction. The individuals concerned with this company have profound knowledge in materials used in building purposes and thus the initiation of providing quality materials with appropriate price in the Nepalese market has been attempted.

Kshamadevi is the diverse group of companies committed for the complete construction solution needs. Our services and products range from the aluminum products, UPVC products, Hardware materials, Construction services, Interior decoration, lighting materials to Tiles, Marbles, Sanitary Items, Pipes and fittings. We mainly are the construction and trading company that imports various products from foreign countries and supply them to the Nepalese market as per its necessity in the period of construction. The major International Brands that we supply in the market: HIL, CK Birla, Aerocon, Liper, Conch, Somany, A-One, L&T.

OUR VISION:

To be Nationwide respected corporation by successfully establishing itself as the most reliable source for meeting complete construction needs within the country.

OUR MISSION:

To supply the best suitable construction related products and provide high quality services in the Nepalese Market for fulfilling all construction needs.

OUR OBJECTIVES:

- To provide reliable services by sourcing them from reputed manufactures and deliver them on time.
- To supply the best suitable construction related products and services in the Nepalese market.
- To play fair between the quality and price of the products. To supply high quality products and services at a reasonable price.
- To establish longer and closer working relationship with the clients and suppliers for not only to provide immediate and reliable services, but also to continually exceed their expectations and goals.

Contact us at:

Address: Kaushaltar, Bhaktapur (Head Office)

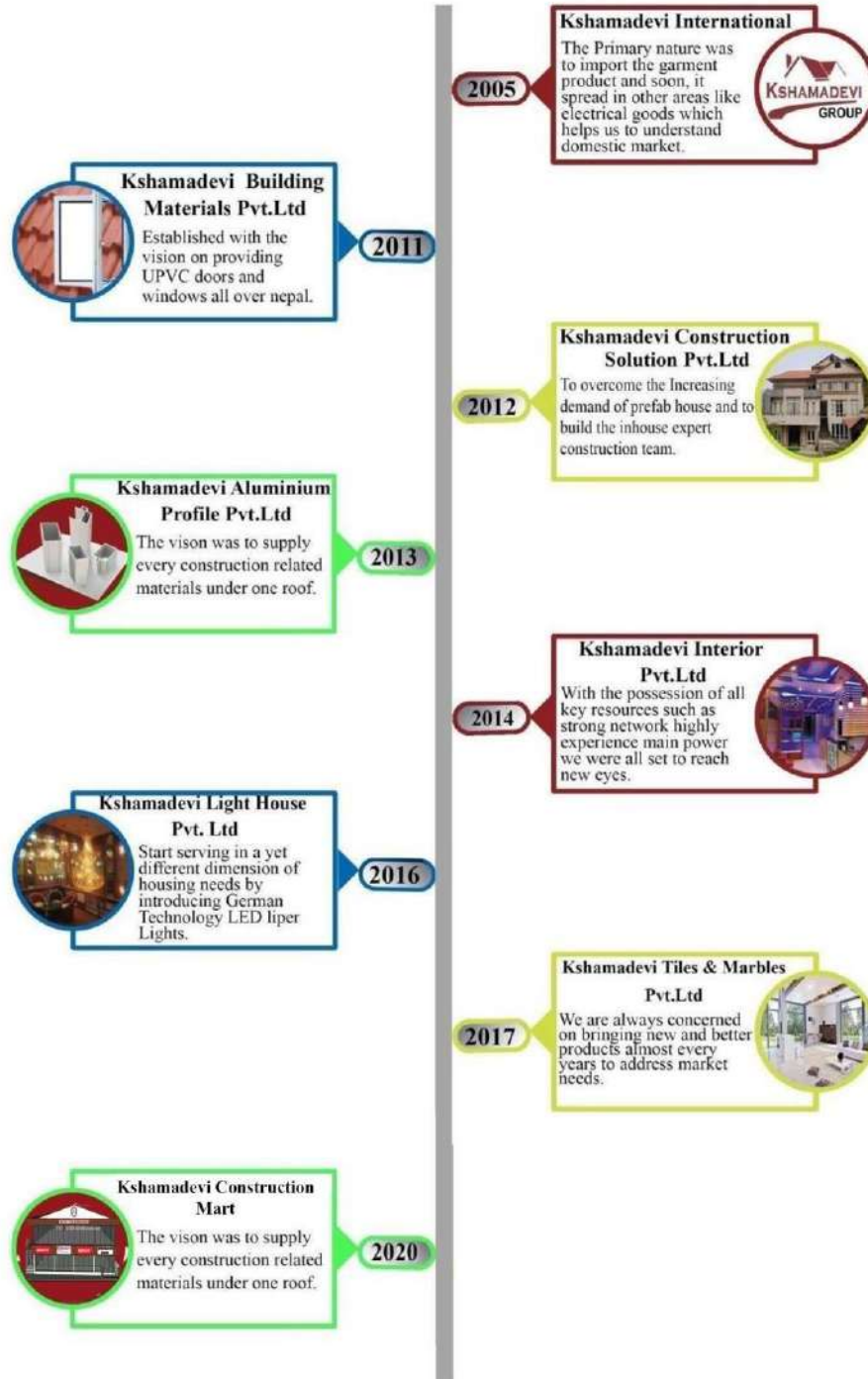


Website: www.kshamadevigroup.com

Contact number: 01-6632137,016633306

Kshamadevi Group Formation Timeline

Years In A.D



BOARD OF DIRECTOR



Mr. Hom Bahadur Basnet
Chairman



Mr. Niranjana Shrestha
Director



Mr. Bhes Bahadur Basnet
Director

OUR PRODUCTS BRAND

Electrical Products



UPVC WINDOWS DOORS



Interior Products



Hardware tools



Tiles and Bathwares



Organization Overview



Over

16 years
of strong legacy



200+ Employees



**8 Associated
Companies**



**350 * Dealers all
over country Nepal**



Average age of
employee

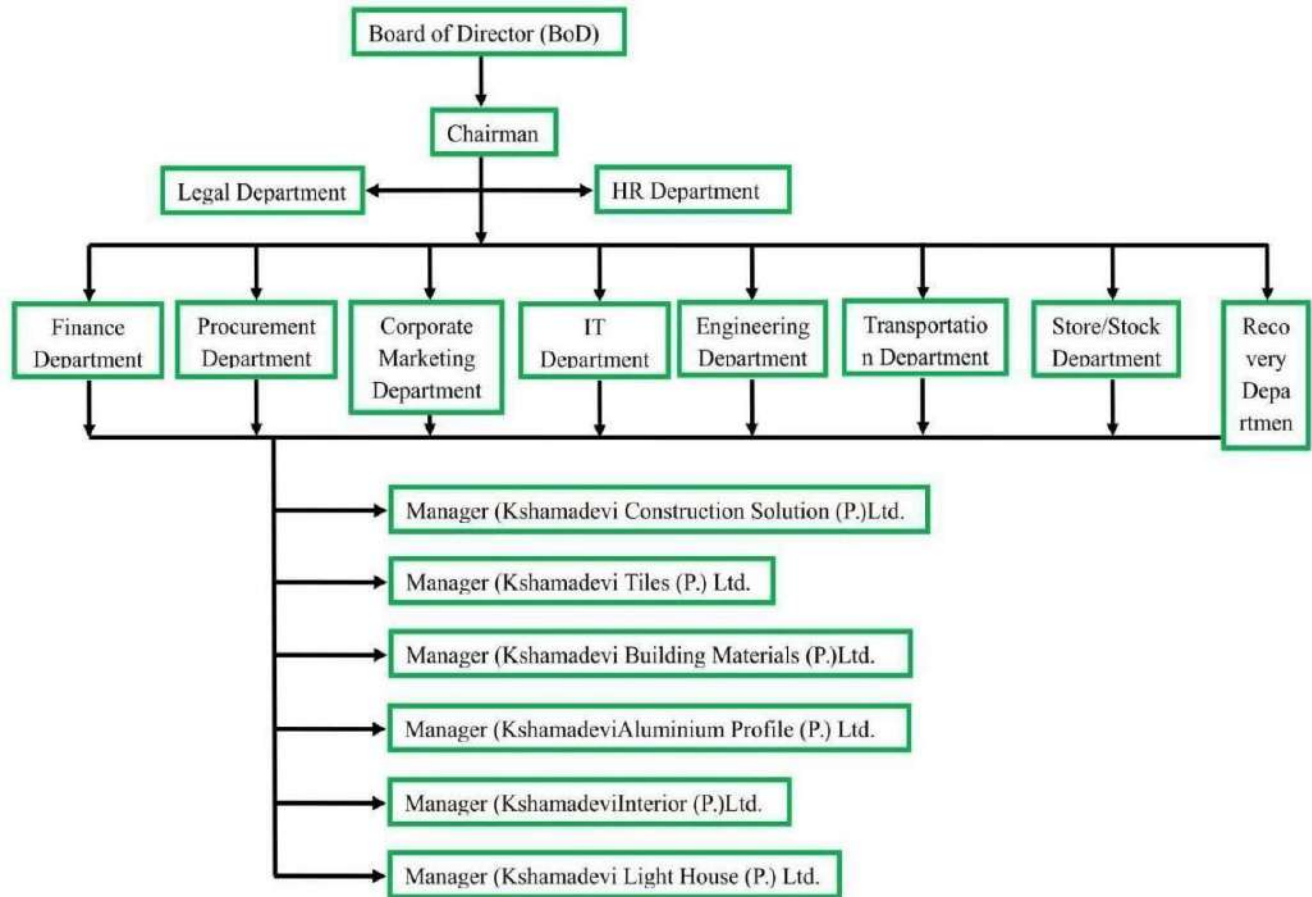
29 years



16 Engineers



ORGANISATIONAL STRUCTURE



KSHAMADEVI CONSTRUCTION SOLUTION PVT. LTD.

Kshamadevi Construction Solution Pvt. Ltd. was incorporated on 25th day of April, 2013, after successful establishment Kshamadevi Building Materials Pvt. Ltd. with a view to revolutionize traditional RCC building techniques with easy building and earthquake proof construction materials. The company uses imported goods from India and China for construction (Commercial Buildings, Hospital, School, Hotels & Resort, Private and Government Buildings).

Kshamadevi Construction Solution focuses on building Prefab House. The easy to make and reusable modules of Prefab house generally takes 4-5 weeks to be completely ready. Also, Nepal being a core center prone to earthquake, prefabricated houses might be an answer to secure housing system, which also helps in establishing pollution free and eco-friendly environment. The Prefab house is usually cheap than RCC buildings and stronger to some point and is fit for Schools, Health Posts, Hospitals and temporary sheds. Also, Kshamadevi Construction has been socially responsible by building Prefab houses to the victims of Earthquake during 2015.

PROJECTS

Within last 5 years, Kshamadevi Group has completed construction services in more than 500 projects during this span. The following are some of our many projects that we are happy to be associated with:

Major Projects:

S.N	Clients	Major Work	Project Location
1.	Mechi Crown Plaza	Civil, Electrical, Plumbing, Landscaping.	Dhulabari, Jhapa
2.	HAMS Hospital	Civil, Electrical, Plumbing, Landscaping.	Mandikhatar, Kathmandu
3.	National Police Academy	Prefab Building	Panauti
4.	Eyeplex Mall	Steel Structure and Interior	Baneshwor
5.	Nepal Police Station	Prefab Building	Namchee Bazar
6.	Kanjirowa School	Civil, Electrical, Plumbing.	Balkumari
7.	B.P Koirala Memorial Hospital	Civil, Electrical, Plumbing.	Dharan
8.	Nepal Police School	School Block	Kavrepalanchwok
9.	Milestone Media Pvt. Ltd	Prefab Building	Tripureshwor
10.	Soaltee Hotel	Interior work	Kathmandu

Projects:

S.N	Clients	Address
1.	Kathmandu Valley School	Maharajgunj
2.	Herald International College	Kathmandu
3.	Arunima Education Network	Jorpati
4.	Mathilo Bhotekoshi	Jhyangbo
5.	Marfa Kaygu Dharma Preservation Centre	Namobuddha, Kavrepalanchwok
6.	Soaltee Hotel	Nepalgunj
7.	Tara oriental Badegaun	Lalitpur
8.	Art of Living	Sankhamool
9.	Times Prime TV	Baneshwor
10.	The Interior and Décor Pvt. Ltd.	Bhaktapur
11.	Yeti Event Venue	Basundhara
12.	Greenlife Energy Pvt. Ltd.	Dolakha
13.	Global Nursing College	Gwarko
14.	Sindhu Sadabazar Hospital	Khadichaur, Sindhupalchowk
15.	Global Public School	Pepsicola
16.	Greenwich School	Kathmandu
17.	Soaltee Hotel	Nepalgunj

Also, we have built 26 government schools in remote areas of Sindhupalchowk and Dolakha after the earthquake of 25th April 2015.

Kshamadevi Construction Solution Pvt.Ltd

OUR TEAM



Mr. Niranjan Shrestha
Director



Er. Basanta Neupane
COO



Er. Prajwal Kiju
Sr.Engineer
(Structure)



Er. Saroj Shrestha
Engineer



Pratima Banjara
MEP Engineer



Ar. Kalpana Bhandari
Architect



Sijan Shakya
CA, Finance Head



Bishwo Nath Dahal
Sr. Accountant



Manoj Panthi
HR Head



Shree Krishna Basnet
Project Manager



Khagendera Parajuli
Site Supervisor



Nandalal Shrestha
Site Supervisor



Abhishek Phuyal
Engineer

SOME GLIMPSE OF OUR PROJECTS



Hotel Mechi Crown



HAMS Hospital



Jomsom Hotel



Eyeplex Mall



Soaltee Hotel
Construction of Seminar Block



UAE Embassy



Korean School



Hotel Seven Star



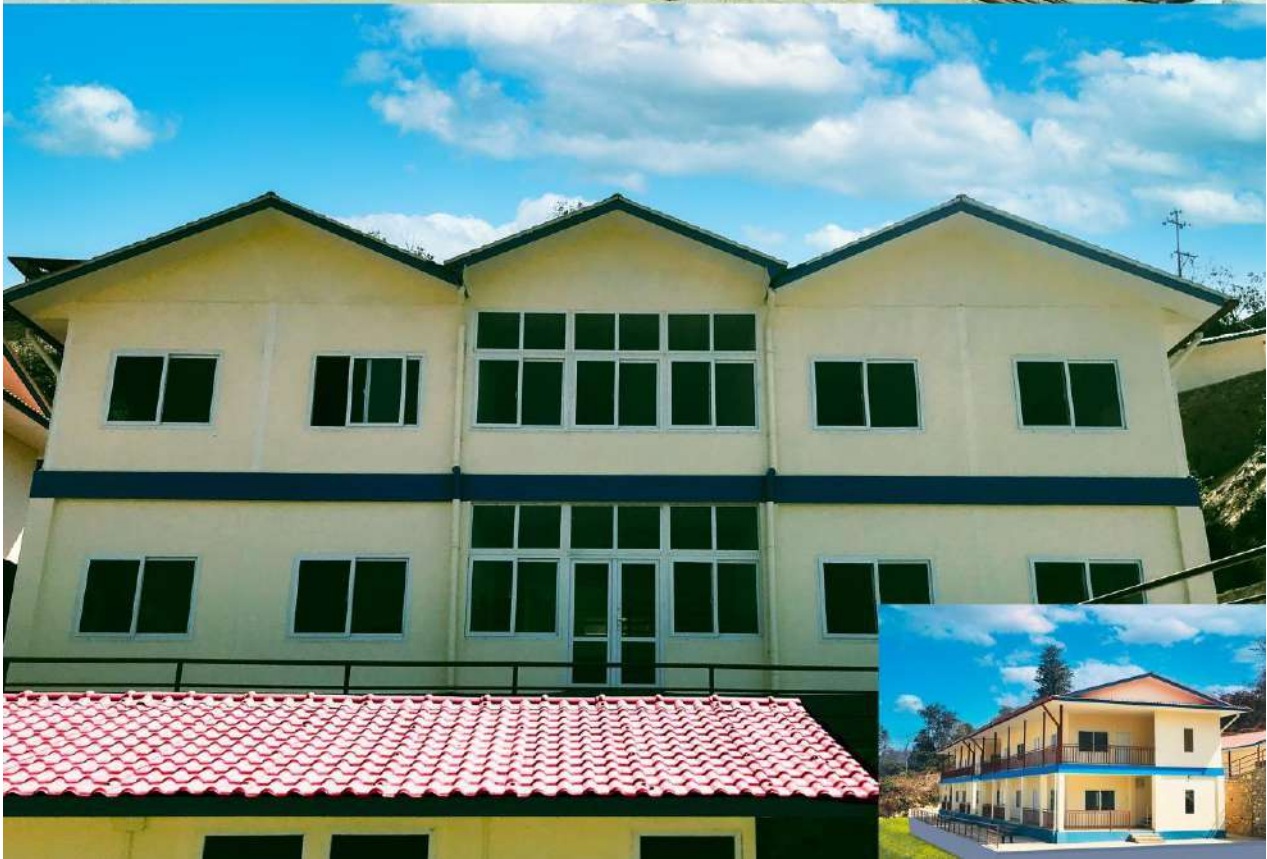
Durga Bhawani school

Soaltee Hotel Interior Work



National Police Academy





Isolation Ward During COVID-19



Dang



Rukum

HOTEL MECHI CROWN



KSHAMADEVI INTERIOR SOLUTION PVT. LTD

Kshamadevi supplies various interior construction materials likes, gypsum boards, panels, cement boards, typically used on the prefab house under roof name of Kshamadevi Interior Pvt. Ltd. incorporated on 21st day of December.

The company deals with import and sales of products required for interior designing of the home and construction material of Prefab Houses that includes Cement Boards, Panels, Gypsum Boards, PVC False Ceiling and also Pipes and fittings. The company imports products from HIL Ltd. (Birla Group), and is the authorized and sole dealer of the brand in Nepal. The Aerocon Cement boards and Panels imported from HIL Ltd. is a certified green product that provides excellent design flexibility, good resistance to fire, moisture, corrosion and termites. This Board also provides good resistance to sound and greater thermal insulation.

Aerocon Prefab Panels

We import Birla Aerocon Panel from India. Aerocon Panel holds Patents in 7 countries. We supply these panels and also construct Prefab house using these Panel. Please go through the tab, Kshamadevi Interior Pvt. Ltd and Kshamadevi Construction Solutions Pvt. Ltd. for detailed information about this category of Product.

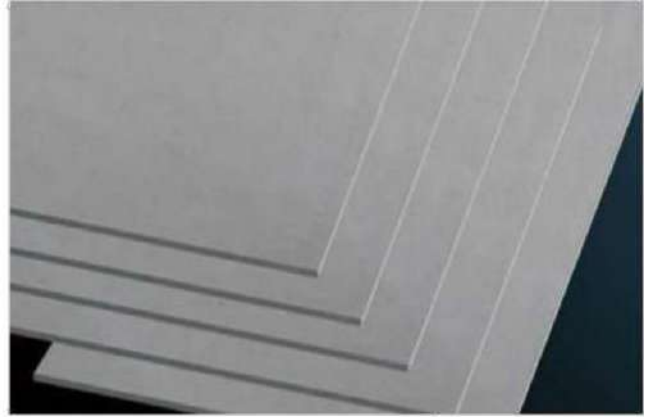
Advantages of Aerocon Prefab Panels:

- Excellent substitute for drywalls.
- Pre-cured. Simple Installation. Save up to 80% of construction time.
- Build full- and half-height partitions, prefabricated structures and mezzanine floors. Certified green.
- Ideal for educational institutions and hospitals. Available in different sizes.
- Maximizes carpet area by reducing wall thickness.
- Strong enough to hold air conditioners, televisions, audio equipment and other common loads



Aerocon Cement Boards

We are the authorized distributor of Birla Aerocon Cement Board from India. We have been distributing the widest range of specialized building boards for the construction sector. Please go through the web, Kshamadevi Group for detailed information about this category of Product.



Advantage of Aerocon Cement Board:

- A certified green product.
- Available in multiple sizes.
- Excellent design flexibility.
- Good resistance to fire, moisture, corrosion and termites.
- Good resistance to sound and greater thermal insulation ISI certified.

Kshamadevi Interior Pvt.Ltd

OUR TEAM



Mr. Bhes Bahadur Basnet
Director



Ar. Rojita Sharma
Architect



Anil Kumar
QA Engineer



Er. Subekshya Thakuri
Engineer



Ridesh Kumar Budha
Engineer



Amit Neupane
Finance Head



Niroj Bhandari
Manager



Roshan Lalchan
Sr. Accountant



Manoj Panthi
HR Head



Roshan Basnet
Marketing Officer



Kailash Rokka
Supervisor



Yukta Bahadur Bhandari
Site Supervisor



Pawan Karki
Store Keeper

Birla Aerocon CPVC & uPVC Pipes and Fittings

The UPVC and CPVC pipes and fitting are also imported from HIL Limited, India. Only strong pipes are not enough. You need a perfect pairing of pipes and fittings to ensure leak proof joints and to keep your walls beautiful for years to come. The Aerocon Pipes & Fittings uses top-notch high-end quality products with TrueFiT® technology which makes pipes and fittings for perfect fit and 100% Leak-proof Joints that is uniquely designed corrosion-resistant with smooth bore for free flow of water.



Advantages of Birla Aerocon CPVC & uPVC Pipes and Fittings:

- TrueFiT® technology for perfect fit and 100% Leak-proof Joints
- Top notch raw materials to deliver high-end quality products.
- Uniquely designed corrosion-resistant Brass fittings to deliver high-torque-bearing capability.
- Robust manufacturing processes and stringent quality control Anti-microbial makes it safe for drinking purpose

PROJECTS:

These are some of the projects that we are happy to associate with which we have included below:

S.N	Projects	Project Location
1.	Mechi Crown Plaza	Dhulabari, Jhapa
2.	Serene Resort	Nagarkot
3.	HAMS Hospital	Mandikhatar, Kathmandu
4.	Dalima Resort	Kurintar
5.	Torkay Hill Resort	Beni
6.	Together Holding Company (The Ageo Restro)	Jhamishikhel
7.	United Fashion knitting Pvt. Ltd	Nayabazar
8.	Jananta TV	Magdi
9.	Thamel Resort	Thamel
10..	Kathmandu Sweet Home	Thamel
11.	Yeti Event Venue	Baneshwor
12.	Art of Living	Sankhamul

SOME GLIMPSE OF OUR PROJECT



KSHAMADEVI BUILDING MATERIALS PVT. LTD.

Kshamadevi Group supplies building materials under the parent company naming Kshamadevi Building Materials Pvt. Ltd. It is the first venture of the Kshamadevi group and was incorporated in 13th of October 2011.

The company specializes in windows and doors made up of uPVC and uPVC roofing. The uPVC profiles are imported from Shanghai Conch Profile Co. Ltd., China of which we are official dealers and distributors for Nepal.

Globally, uPVC windows and uPVC doors have been well accepted, with wide usage, due to better aesthetics and excellent insulation characteristics. Double glazed windows with uPVC frames are proven performers in reducing energy consumption for heating and cooling and consequently over their whole lifecycle can reduce a building's greenhouse gas emissions by as much as half compared to the use of aluminum framed windows.

The excellent quality of UPVC roofing sheet is ensured by using high-quality materials, high-tech durability formula, and the whole set of imported tri-ply co-extruded compound foamed equipment.

The multiple advantages and benefits of uPVC make it a versatile fenestration choice because of its strength, durability, low maintenance, energy efficiency, and sustainable qualities, as well as its resistance to corrosion, dents, and scratches.

Advantages of UPVC Windows and doors:

- UPVC windows are the Number One in energy efficiency.
- UPVC windows have a very good cost-benefit ratio.
- UPVC windows are easy to care for.
- UPVC windows are remarkably durable.
- UPVC windows boast an excellent eco balance.

The technical specification of the Window and door are as follows:

- Sliding Window frame: 88x52x2.5mm
- Sliding Window Sash: 57x42x2.5mm
- Casement Window Frame: 78 x 60x 2.5mm Glass: 5mm/10mm
- Casement Window Sash: 78x 60x2.5mm
- Hinge Door Frame: 60x60x2.5mm
- Hinge Door Sash: 104x60x2.5mm
- Door Panel: 100x25x2.5 mm
- Color: White
- Iron: Galvanized Iron 1.2 mm
-

Advantage of UPVC Roofing Sheets

- Anti-oxidants & modifying agents and UV Stabilizers gives very High service life.
- Excellent heat insulation property and anti-corrosion capacity.
- Very good at Acid & alkali resistant.
- High anti fire capacity.
- High impact strength due to integration of impact modifiers.
- Non – Carcinogenic Easy process for nailed, sawed or cut.
- Low structural cost as Multilayer UPVC roofing sheets is Light weight.

The technical specification of the roofing sheets are as follows:

- Weight 5.5 kg per sq. meter
- Purling Distance: Every 800mm
- Strength: 32mpa
- Breadth: 3ft 3 inches, 3 ft 6 inches
- Thickness: 3mm
- Length: 1ft to 12ft/14ft/16ft/18ft 8in. 19.2 in.



UPVC Laminated Doors



Door Size: 2100x1000x270mm
1950x800x270mm

7 Performance Characteristics

- Environmental Protection
- Anticorrosion Moistureproof
- Fire Retardant More security
- Heat Preservation and Heat Insulation
- High Strength
- Hollow Structure Deformation
- Easy to Repair



KSHAMADEVI ALUMINUM PROFILES PVT. LTD.

Kshamadevi group of companies introduced Kshamadevi Aluminum Profiles Pvt. Ltd. on June, 2014 to compete in the growing and popular Aluminum market. The company imports various types of Aluminum Profiles from China and also Silicon used in Aluminum Fabrication works and making windows / doors and partitions. Kshamadevi supplies high grade aluminum products under the brand name A-one and is the best and high grade aluminum profiles that is found in the Nepalese market which is under the budget of our valued customers. In the same way silicon's imported by Kshamadevi are of A-grade quality.

We import and sell all the sections of aluminum under the following series, thickness and colors:

Series	Thickness	Color
78mm	1 mm, 1.2 mm	Natural, Black, Bronze, Matt Natural, Powdered Coated White
90 mm	1 mm, 1.2 mm	Natural, Black, Bronze, Matt Natural, Powdered Coated White
100 mm	1 mm, 1.2 mm	Natural, Black, Bronze, Matt Natural, Powdered Coated White

We also import other aluminum products as per the request and need of our clients.

KSHAMADEVI LIGHT HOUSE PVT. LTD.

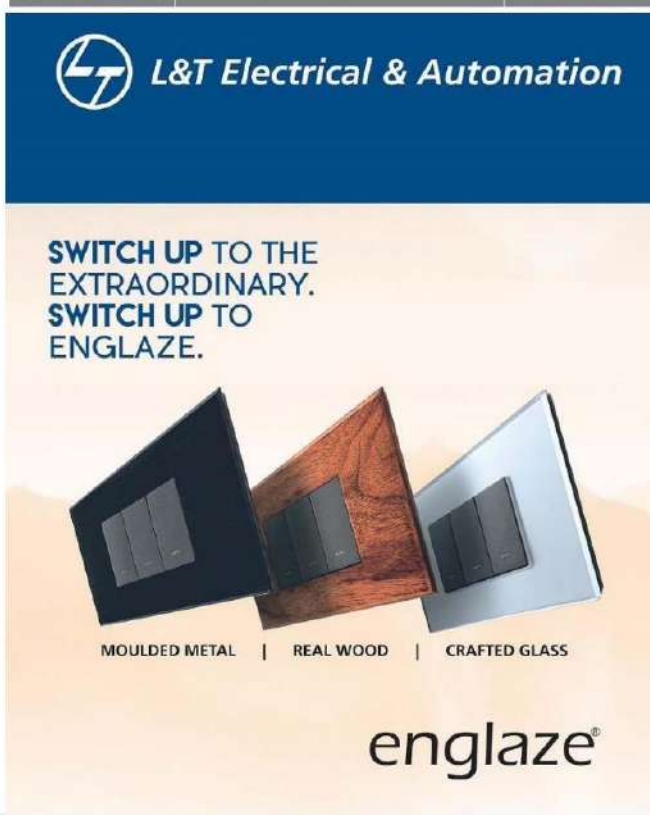
Kshamadevi supplies complete lighting solution for any structure under one roof under the name of Kshamadevi Light House Pvt. Ltd, incorporated on 9th day of August, 2016

The company deals with all kind of electric lights and wires required after building a house and imports from ZHEJIANG LIPER LIGHTING TECHNOLOGY CO. LTD., China which is the manufacturing house of the popular German Light Liper. Kshamadevi Light house provides its customers with different variety of LED lights, Wall Lights, Hanging lights, Focus light, and many more. Kshamadevi Light House Pvt. Ltd is also sole distributor of Liper Brand Electronic Lights for Nepal.

We sell wide range of lights falling under almost 20 categories. We are the Sole Distributor of Liper German lights in Nepal. Similarly, we also sell LED lights falling under the Brand KSD. Please go through the tab, Kshamadevi Lighthouse Pvt. Ltd. for detailed information about this category of Product.



We are the sole authorized distributor of L & T Electrical and Automation from India. We have been distributing the widest range of Electrical Products all over the county Nepal. Please go through the web, Kshamadevi Group for detailed information about this category of Product.



KSHAMADEVI TILES AND MARBLES PVT. LTD.

The new company of the group Kshamadevi Tiles and Marbles Pvt. Ltd. Was incorporated on 13th day of November, 2017 with a view of supplying variety of possibilities for tiles and marbles as well as sanitary ware from the renowned brands like Somany, Setmax, Lavish for tiles and premium marbles from Rajasthan. The company imports its sanitary ware from a premium brand Guess from china.



SOMANY

WIDEST RANGE OF WATER HEATERS

UPTO

8 YEARS WARRANTY*
On Inner Tank

4 YEARS WARRANTY*
On Heating Element

2 YEARS WARRANTY*
Comprehensive
Warranty on Whole Product

WARRANTY



Hand Sanitizer

